

CONNECT COLOLIGHT WITH GOOGLE HOME

Preparations

Google speaker: Hub, Mini, Google Home, Max etc.

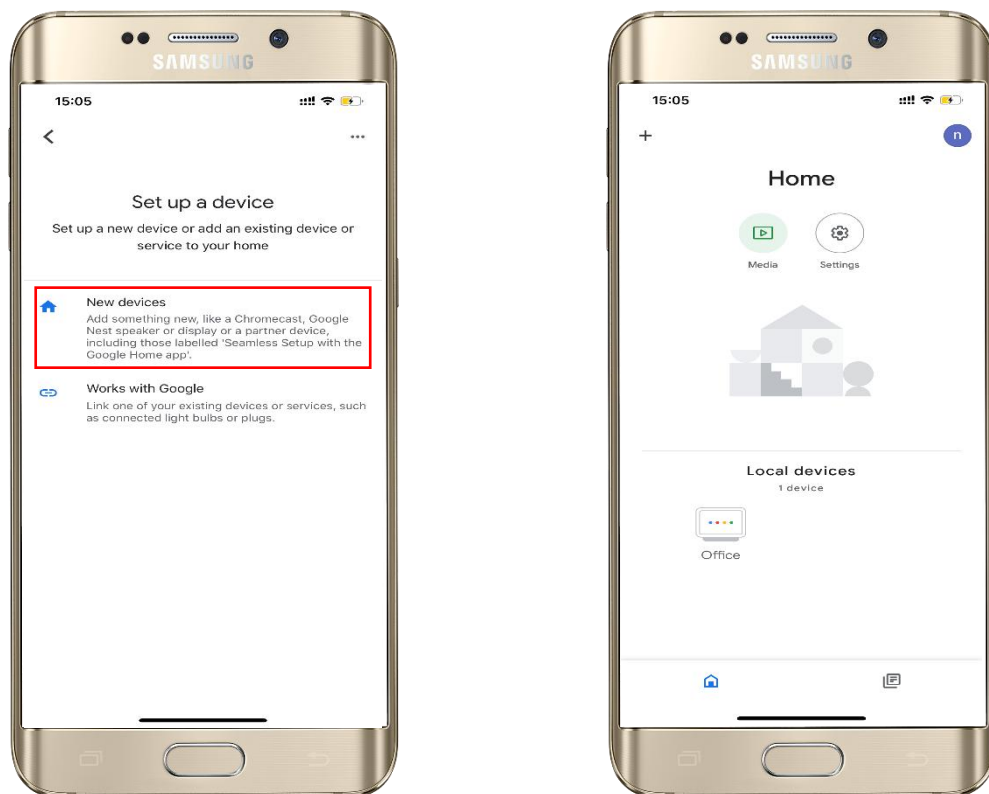
Cololight

APP: "Google Home", "Cololight", 'LifeSmart'

Add devices

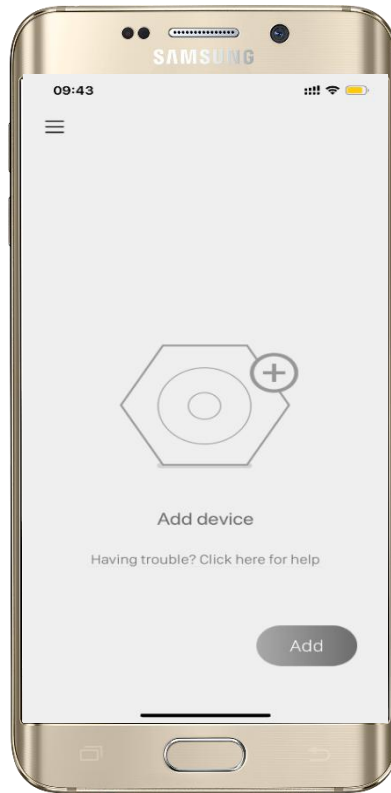
1. Add a Google speaker.

Click '+' on top left of the Google Home app, tap set up device, select New devices, then follow the steps to search the speaker nearby.



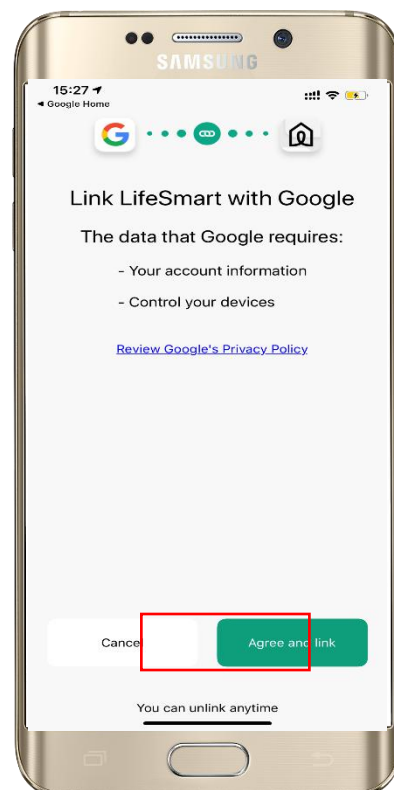
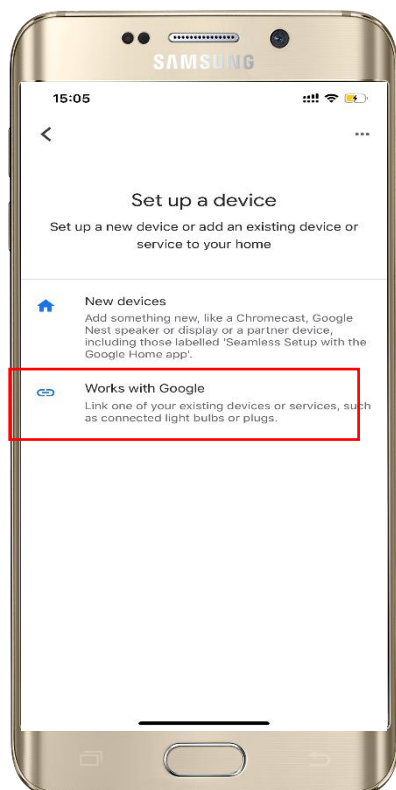
2. Add a Cololight:

Login LifeSmart account on Cololight app, follow the steps on the app to pair the light to the account.

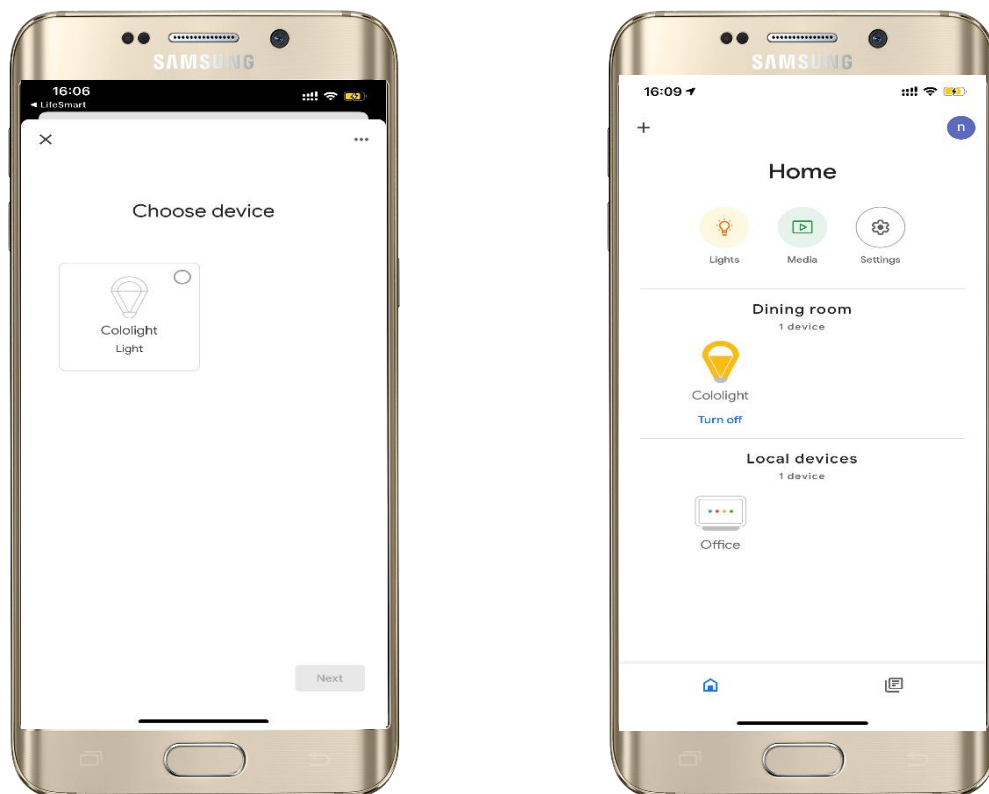


Authorize LifeSmart to Google

1. In LifeSmart app login the account.
2. Click '+' on top left of the Google Home app, tap 'Set up device', select 'Works with Google', in the next page input LifeSmart and search. Click 'Agree and link', wait about 10s the authorization will finish, Google Home will automatically link to the LifeSmart account that currently logged in.



3. Select the Cololight, select a home and location for the light according to the app, then the Cololight is synchronized to Google Home successfully.



Enjoy the smart control with Google

You can either check the device status or switch ON/OFF on Google Home app, or just speak to Google Home.

e.g. *Hey Google, change Cololight brightness to 50%.*

Hey Google, change Cololight to red.

